

**DENILIQUIN**  
**Ute Muster**

**29<sup>th</sup> & 30<sup>th</sup> SEPT 2023**

**IN ALPHABETICAL ORDER**

**ADAM HARVEY & BECCY COLE**

**ANDREW SWIFT CASEY BARNES CATHERINE BRITT**

**JAMES JOHNSTON JAYNE DENHAM JESSICA MAUBOY**

**JOHN WILLIAMSON LEE KERNAGHAN MISSY HIGGINS**

**THE WHITLAM'S BLACK STUMP BAND TRAVIS COLLINS**

**ZARA LINDEMAN**

**AMBER LAWRENCE "KIDS GONE COUNTRY SHOW"**

**ANAGRAM RIOT BRITTANY ELISE (2022 GYMPIE MUSIC MUSTER TALENT SEARCH)**

**BRITTANY MAGGS CARP FACTORY DUNCAN TOOMBS GRETTA ZILLER**

**JADE GIBSON JAMIE PRESTON**

**LOREN RYAN (2023 TOYOTA STARMAKER)**

**PETE DENAHY RHYS CRIMMIN**

**THE BUSH POETS**

**TICKETS  
ON SALE NOW!**



**deniutemuster.com.au**

## ***2023 Chairman's Welcome***

On the NSW Labour Day Weekend, all roads will lead to Deni to party on the plains for the 2023 Deni Ute Muster. Hosting an all-Australian line up going into our 25th year of operation we are so excited to host a fantastic weekend for all.

The Deni Ute Muster Volunteer Board of Directors and team of Muster staff are proud to deliver an all-Australian line up including John Williamson, Lee Kernaghan, James Johnston, Casey Barnes. As well as Missy Higgins and Jessica Mauboy, with many more!

Of course, we never stop at the music; our Around the Grounds Entertainment Coordinator has put together an action-packed program. Ice skating, Monster Truck Rides, ferret races, circus zone only to name a few.

I would like to thank my fellow board members for the on-going support and dedication to making the Muster a success. I would also like to thank our General Manager Vicky Lowry and her hard-working team who bring great passion and enthusiasm to the event. But most importantly, I would like to thank our volunteers and the community for their on-going support.

A huge thankyou to all our sponsors for the event, we thank you for your generous support.

Most importantly, welcome to the 2023 Deni Ute Muster. Enjoy the music and entertainment on offer, thank you for supporting our country – stay safe and look after your mates!

Regards,  
***Russell Tait***  
***Chairman***

# ***Welcome from the NSW Government – Deni Ute Muster***

Welcome to Deniliquin for the 2023 Deni Ute Muster, proudly supported by the NSW Government's tourism and major events agency, Destination NSW.

The Deni Ute Muster is one of the most unique and popular bucket list events in Australia attracting thousands of people of all ages and backgrounds to celebrate music, mateship and, of course, the iconic Aussie 'ute'.

With a stellar line-up of some of our most loved homegrown artists, thrilling driving competitions and numerous other activities and attractions around the grounds, the Deni Ute Muster delivers two days of fun for the whole family from sunup to sundown.

The Deni Ute Muster also makes a vital economic contribution to the surrounding NSW Riverina region, attracting thousands of patrons, event staff, officials and performers who stay and dine in our hotels, pubs and restaurants and visit local attractions, providing a significant boost to the visitor economy.

With world-class wineries, riverboat adventures, bushwalks, charming towns, stunning landscapes and exceptional food, there is so much to discover in the NSW Riverina at [visitnsw.com](https://visitnsw.com). Have a safe and enjoyable Deni Ute Muster and be sure to take some time out from the event to enjoy the many natural wonders and warm local hospitality that the NSW Riverina is famous for.





FEEL LIKE  
THE ONLY



PEOPLE  
ON EARTH

📍 Broken Hill



[visitnsw.com](http://visitnsw.com)

feel new south wales





# HOURS OF OPERATION

## TICKETING BOX

Thurs 28th: 7am-8pm  
Fri 29th: 7am-10pm  
Sat 30th: 7am-10pm

## ENTRANCE GATES

Thurs 28th: 8am-7pm  
Fri 29th: 6am-Midnight  
Sat 30th: 6am-Midnight

## INFO CENTRE/ BREATHO

Thurs 28th: CLOSED  
Fri 29th: 8am-Midnight  
Sat 30th: 8am-Midnight  
Sun 1st: 6am-11am

## MERCH SHED

Thurs 28th: 12 noon-10pm  
Fri 29th: 8am-10pm  
Sat 30th: 8am-10pm  
Sun 1st: 6am-11am

## FESTIVAL ARENA

Thurs 28th: CLOSED  
Merch Shed & Main Top Up Open  
Fri 29th: 8am-Midnight  
Sat 30th: 8am-Midnight  
Sun 1st: 6am-12noon

## OPERATIONS CENTRE

Thurs 28th: 8am-Midnight  
Fri 29th: 8am-Midnight  
Sat 30th: 8am-Midnight  
Sun 1st: 6am-12noon

## MEDICAL CENTRE

Thurs 28th: 9am-Midnight  
Fri 29th: 24hrs  
Sat 30th: 24hrs  
Sun 1st: 24hrs

## IRON JACK BAR

Thurs 28th: CLOSED  
Fri 29th: 10am-11pm  
Sat 30th: 10am-11pm  
Sun 1st: CLOSED

## MAIN TOP UP

Thurs 28th: 12 noon- 10pm  
Fri 29th: 8am-11pm  
Sat 30th: 8am-11pm

## CAN BAR

Thurs 28th: CLOSED  
Fri 29th: 6pm-11pm  
Sat 30th: 2pm-11pm  
Sun 1st: CLOSED

## BULL BAR

Thurs 28th: CLOSED  
Fri 29th: 2pm-11pm  
Sat 30th: 2pm-11pm  
Sun 1st: CLOSED

## BUNDY BAR

Thurs 28th: CLOSED  
Fri 29th: 10am-11pm  
Sat 30th: 10am-11pm  
Sun 1st: CLOSED





# 2023 BUS TIMETABLE

## Friday 29th September

GOING TO MUSTER SITE <small>(Wired Entertainment Stop)</small>	GOING TO TOWN <small>(Muster Bus Stop)</small>	GOING TO MUSTER SITE <small>(Wired Entertainment Stop)</small>	GOING TO TOWN <small>(Muster Bus Stop)</small>
TOWN SERVICE		EXPRESS SERVICE	
9.00am	9.30am		
10.00am	10.30am	10.00am	10.15am
		10.30am	10.45am
11.00am	11.30am		
12.00pm	12.30pm	12.00pm	12.15pm
		12.30pm	12.45pm
1.00pm	1.30pm		
2.00pm	2.30pm	2.00pm	2.15pm
		2.30pm	2.45pm
3.00pm	3.30pm	3.00pm	3.15pm
		3.30pm	3.45pm
4.00pm	4.30pm	4.00pm	4.15pm
4.30pm	5.00pm	4.30pm	4.45pm
5.00pm	5.30pm	5.00pm	5.15pm
6.00pm	6.30pm	6.00pm	6.15pm
6.30pm	7.00pm	6.30pm	6.45pm
7.00pm	7.30pm	7.00pm	7.15pm
7.30pm	8.00pm	7.30pm	7.45pm
8.00pm	8.30pm	8.00pm	8.15pm
8.30pm	9.00pm	8.30pm	8.45pm
9.00pm	9.30pm	9.00pm	9.15pm
		9.30pm	9.45pm
		10.00pm	10.15pm
10.00pm	10.30pm	10.30pm	10.45pm

BUSES WILL RUN EVERY 20 MIN UNTIL MIDNIGHT

### TOWN SERVICE

Wired Entertainment  
Deni RSL Club (Duncan St)  
East End Store  
Cnr Crispe & Henry St  
BIG4 Deniliquin  
Edward Public School  
McLeans Beach Caravan Park  
Centrepont Motel  
Riverside Caravan Park  
Caltex North  
Pioneer Gardens  
Muster Site Bus Stop

### EXPRESS SERVICE

Wired Entertainment  
McLeans Beach Caravan Park  
Ute on the Pole (opp IGA)  
Muster Site Bus Stop

### BUS PRICES

\$20 Adult Weekend  
(unlimited travel)  
Junior 13-17 \$10 Weekend  
(unlimited travel)  
Under 13 Free with an Adult  
Single Trip \$10 per trip

\*ALL BUSES ARE WHEELCHAIR ACCESSIBLE.

## Saturday 30th September

GOING TO MUSTER SITE <small>(Wired Entertainment Stop)</small>	GOING TO TOWN <small>(Muster Bus Stop)</small>	GOING TO MUSTER SITE <small>(Wired Entertainment Stop)</small>	GOING TO TOWN <small>(Muster Bus Stop)</small>
TOWN SERVICE		EXPRESS SERVICE	
9.00am	9.30am	9.30am	9.45am
10.00am	10.30am	10.00am	10.15am
		10.30am	10.45am
11.00am	11.30am	11.00am	11.15am
		11.30am	11.45am
12.00pm	12.30pm	12.00pm	12.15pm
		12.30pm	12.45pm
1.00pm	1.30pm	1.00pm	1.15pm
		1.30pm	1.45pm
2.00pm	2.30pm	2.00pm	2.15pm
		2.30pm	2.45pm
3.00pm	3.30pm	3.00pm	3.15pm
		3.30pm	3.45pm
4.00pm	4.30pm	4.00pm	4.15pm
4.30pm	5.00pm	4.30pm	4.45pm
5.00pm	5.30pm	5.00pm	5.15pm
6.00pm	6.30pm	6.00pm	6.15pm
6.30pm	7.00pm	6.30pm	6.45pm
7.00pm	7.30pm	7.00pm	7.15pm
7.30pm	8.00pm	7.30pm	7.45pm
8.00pm	8.30pm	8.00pm	8.15pm
8.30pm	9.00pm	8.30pm	8.45pm
9.00pm	9.30pm	9.00pm	9.15pm
		9.30pm	9.45pm
		10.00pm	10.15pm
10.00pm	10.30pm	10.30pm	10.45pm

BUSES WILL RUN EVERY 20 MIN UNTIL MIDNIGHT

### TOWN SERVICE

Wired Entertainment  
Deni RSL Club (Duncan St)  
East End Store  
Cnr Crispe & Henry St  
BIG4 Deniliquin  
Edward Public School  
McLeans Beach Caravan Park  
Centrepont Motel  
Riverside Caravan Park  
Caltex North  
Pioneer Gardens  
Muster Site Bus Stop

### EXPRESS SERVICE

Wired Entertainment  
McLeans Beach Caravan Park  
Ute on the Pole (opp IGA)  
Muster Site Bus Stop



deniutemuster.com.au



f @ #deniutemuster



# COMPETITIONS

COMPETITION	TIME	DAY
GME Australian National Circle Work	11am-1pm	Friday & Saturday
Coates Hire Show N Shine	8am-4pm Presentations 10am	Friday & Saturday Saturday
Just Country Barrel Race	9am – 10am	Friday & Saturday
Go to Wo	10am-11am	Friday & Saturday
Tradie Challenge	9am – 3pm	Friday
Riverina Whipcracking Challenge	2pm-5pm 2pm *Novice Event 9am-5pm	Friday Saturday
Bull Ride	3pm – 5pm	Friday & Saturday
Wood Chopping	11am – 4pm 9.30am – 4pm	Friday Saturday
Mini Muster Mobeel (Show n Shine Arena)	9.30am	Saturday

## GME AUSTRALIAN NATIONAL CIRCLE WORK

The GME Australian National Circle Work Championships celebrate the 'best of the best' ute drivers! The championships are judged on a one-minute run per ute. The judges award points for driving skills, number and execution of circles, number and execution of figure eights and crowd reaction.

## COATES HIRE SHOW N SHINE

The Coates Hire Show N Shine at the Deni Ute Muster is not to be missed! Displaying the best of Australia's utes, this competition is the perfect opportunity for you to showcase your ute and prove why it is the best of its kind. You will also have the opportunity to win a stack of prizes or even the \$2,000 'Ute of the Year' title.

## JUST COUNTRY BARREL RACE

Everyone has seen horses at rodeos go flat out across the arena and around barrels, this is just the same but for utes! Two utes will take off at the same time and head around the course set out by barrels, and try and get around them as fast as possible, without knocking them over, of course!



## GO TO WO

This competition is for drivers who can run their ute around a driving course and stop with precision. The Go to Wo will see utes, two at a time, run the course and try and stop within a predetermined space. The person who stops closest to the witches' hat, and completes the course the quickest, free from infringements, will win!

## TRADIE CHALLENGE

The Tradie Challenge is back! Entrants will be given limited materials and tools to build sandpits.



## RAY WHITE RIVERINA WHIPCRACKING CHALLENGE

Head over to the Whipcracking Arena at this year's Deni Ute Muster and witness some of the best Whipcracking in the country. \*Novice competition open to all at 2pm on Friday.

## ARB BULL RIDE

Come along and witness the most dangerous sport on earth – The ARB Bull Ride. Can riders hang on for 8 seconds against the bulls? There will be more than 20 bull riders trying to do exactly that.

## WOOD CHOPPING

Come and see axes fly at the Wood Chop demonstrations. There will be a wide range of cutters.

## MINI MUSTER MOBEEL

Bringing the competition back this year we are expecting even more customised wagons, prams and pulleys. So don't miss out on your chance to be part of the fun. The winning family will receive 2 x 2024 Adult Deni Ute Muster Tickets.





# MUSTER DO'S

## BRING YOUR SENSE OF HUMOUR

Act responsibly and have fun. Look after your mates, drink alcohol responsibly and drink lots of water. Underage drinkers will be escorted to police operations.

## RESPECT THE MUSTER

No stealing, damaging or tampering.

## BRING YOUR OWN WOOD

All logs must be under 60cm x 30cm.

## BRING YOUR OWN CAMPING GEAR

No lounges, household items, large electrical items or building materials.

## BRING YOUR OWN FIRE DRUM

All fires must be contained in a drum (1/2 x 44 Gallon drum or less).

## YOU CAN BRING A GENERATOR

Please be mindful of your neighbours when in use. Make sure your generator is full as extra fuel is prohibited.

## KEEP THE MUSTER BEAUTIFUL

Use the waste services provided and keep our site clean. FREE rubbish bags are available at the Info Centre.



**Keep Deni  
beautiful  
and use the  
waste services  
provided**



# MUSTER DONT'S

## NO GLASS

## NO BUTANE GAS CANISTERS AND BURNERS

## NO ANIMALS

Guide dogs accepted

## NO ILLICIT SUBSTANCES

## NO FIREWORKS, FLARES OR EXPLOSIVES

## NO WEAPONS

Including but not limited to shovels, knives & axes.

## NO TRAFFIC MOVEMENT ONSITE IN THE CAMPING AREAS

Once you have set up camp make sure you stay put. Bus services into Deniliquin CBD available. Head to the Dyson bus stop near gate 1.

## DON'T BE TOO NOISY

There are noise restrictions after midnight in the family camping area. Please respect your camping neighbours.

## NO UNREGISTERED OR PERMIT VEHICLES

Or vehicle parts.

## NO HOUSEHOLD FURNITURE

**Anti-social  
behaviour  
will not be  
tolerated**





# 2023 FESTIVAL ARENA

GATE 1

GATE 5

TRAIN STOP



Operations Centre  
Merch Centre

Top Up  
Merch Centre

CAT  
Tradie Challenge

IRON JACK  
Iron Jack Bar

Trade Sites  
Ice Rink

Carnival

Kids Lawn  
Lego  
Circus Drop Zone

Sand Pit  
Family Centre

Central  
Canteen  
Can Bar  
Corporate Centre

IGA  
IGA Food Court

Day Stage

Trade Sites

Trade Sites

BUNDABERG  
Bundy Bar

Shade Shelters

Ferret Races

Accessible Viewing Platform

Blue Singlet Count

Main Stage

TRAIN STOP

Rock Wall

Trade Sites

Wood Chop

Isuzu Iron Summit

Whip Crack

Bull Bar

Accessible Viewing Platform

Toilets

Toilets

Toilets

Toilets

GATE 2

Driving Competitions  
GME  
JUST COUNTRY  
AUSTRALIA PTY LTD  
Monster Truck Rides  
DENILIQVIN FREIGHTERS Sports Arena

Accessible Viewing Platform

ARB  
Bull Ride Arena

Toilets

GATE 3

Day Entertainment Lawn  
Paw Patrol Jumping Castle  
Rev It Up Racing  
Black Snake Productions  
Squatter Tournament  
Bottle & Brush Painting  
Berkley Fishing Tank



Camel Rides



Coates  
Show & Shine  
Arena



# 2023 MUSTER MAP





# AROUND THE GROUNDS ENTERTAINMENT SCHEDULE

## REV IT UP RACING

Kids, teens & parents - who is the fastest driver in your family? Try out the Rev It Up Racing Junior Racing Experience and find out! Race against each other on the virtual race track for ultimate bragging rights!

**When: 9am-5pm Daily**

**Where: Day Entertainment Area**



## MONSTER TRUCK RIDES

Come and experience what it's like to be a passenger in the back of 'Bear Foot' the monster truck!

**When: 1pm - 5pm Daily**

**Where: Sports Arena**

## BLACK SNAKE PRODUCTIONS WILDLIFE DISPLAYS

The team from Black Snake Productions is delighted to be visiting the Deni Ute Muster with a huge range of animals! They will be bringing the "Mobile Zoo" with a large wildlife display and the new 6m long venomous snake pit.

With both wildlife talks and venomous snake safety and first aid talks all throughout the day, they will have a huge range of animals for people to meet, touch and cuddle. Animals coming along such as crocodiles, pythons, lizards, turtles and more while the highly venomous king browns, taipans, tiger

snakes, death adders and others will be on display safely in the pit during the educational and informative talks.

Snake bite kits and protective outdoor gear will be available to buy while all animal cuddles are free!

**When: 10.00am to 3.00pm**

**Where: Day Entertainment Area**

## WHITEY'S FERRET RACING



You have to see it to believe it, there will be racing ferrets at this year's Muster! Come and join in the fun and bid on a ferret to cheer on during one of the five races daily. Multiple prizes to be won, with all money raised going towards local charity Can Assist.

**When: 10.30am - 3.30pm**

**Friday & Saturday**

**Race Times: 10.30am, 12.30pm, 1.30pm, 2.30pm, 3pm (FINAL)**

**Where: Festival Arena**

## BOGAN BINGO

Half gameshow, half party. All you need is a little sense of humour and the ability to laugh at yourself. During the show the bingo numbers continually prompt snippets of songs, jokes and air guitar competitions that make the crowd the stars of the show.

**When: Friday 4pm,**

**Saturday 11am**

**Where: Iron Jack Bar, Day Stage**





## CIRCUS DROP ZONE



Want to know what it would be like to run away with the circus, or just show off your agility to your friends? The Circus Dropzone gives all ages a chance to throw your hands, feet, hips, and heart into the ring with the help of our highly skilled trainers. Trapeze, juggling, unicycling, hula-hoop.... The Circus Dropzone is a playground for everyone.

**When: 10am to 4pm Friday & Saturday**

**Where: Kids Lawn**

## ICE SKATING RINK

Would you have ever imagined coming to the Deni Ute Muster and being able to go ice skating?! Well, this year is your chance! Come and have a go on our synthetic ice rink and see if your made for the ice.

**When: 10am to 4pm**

**Friday & Saturday**

**Where: Festival Arena**



## BOTTLE AND BRUSH PAINTING WORK SHOPS

Fancy a bit of time out to create yourself a masterpiece. We are super excited to be bringing something fun and creative to this year's Muster, Bottle & Brush Painting Workshops. There will be two sessions – Friday painting an Australian landscape at daybreak or sunset and Saturday a vase filled with beautiful native flowers. Pre booking required

**When: 10.30am to 1pm**

**Where: Day Entertainment Area**



## MACCA

Come and catch up with Aussie camping, caravanning, 4wding, all-round legend Craig 'Macca' McGown. He will be on hand for a yarn Friday and to answer any burning questions you may have.

**When: 10am & 2pm Friday**

**Where: Festival Arena – new shade structure near Bundy Bar**



## TRACKLESS TRAIN

Sick of walking, no worries, jump aboard the Muster Train and we will chauffeur you around the Festival Arena stopping at all your favourite places along the way.

**When: 9.00am to 5.00pm**

**Where: Pick-ups at Gate 2, & Gate 5**



## ROCK CLIMBING WALL



Climb above it all and check out the Festival Arena from 8m up! For those scared of heights, why not challenge yourself as the Rock Climbing Wall has full safety equipment so you need not worry about a thing.

**When: 10.00am to 4.00pm**

**Where: Festival Arena**

## MUSTER SANDPIT

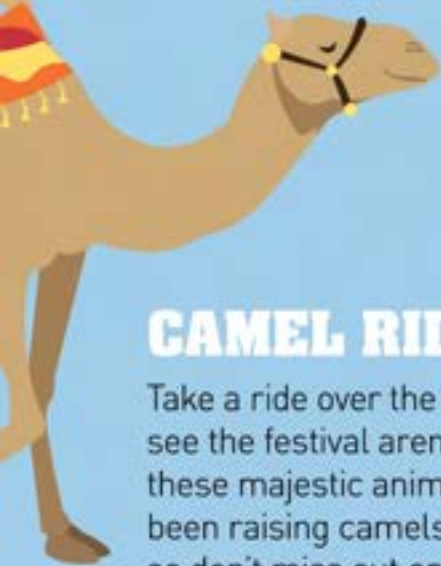
Fancy some time out? Bring the kids to the Muster Sandpit where they will be able to spend hours building castles and utes while you relax and watch their wonderful creations unfold from the seating area.

**When: 8.00am to 6.00pm**

**Where: Kids Lawn**







## CAMEL RIDES

Take a ride over the Muster Plains and see the festival arena from on the back of these majestic animals. Peter Hodge has been raising camels for over two decades so don't miss out on meeting his clever companions.

**When: 9.00am to 5pm**

**Friday & Saturday**

**Where: Day Entertainment Area**

## CARNIVAL CORNER

Would it even be a Deni Ute Muster without the everyone's favourite corner – Carnival Corner! We have all the crowd favourites including dodgem cars, a Ferris wheel and fast paced rides for the adrenaline junkies.



**When: 11.00am to 11.00pm**

**Where: Festival Arena**

## DECENTRALISED DEMOUNTABLES FAMILY CENTRE

The amazing Fusion Group will be running free children's activities each day, including cookie decorating, face painting, woodwork, crafts, games and much more! Baby change and Mother's area are available here as well as free tea and coffee. A place where everyone is welcome to sit down and recharge their batteries before heading back out to enjoy the entertainment.

**When: 9.00am to 6.00pm**

**Where: Festival Arena**



## HELICOPTER RIDES

You've seen the Muster from the ground, but have you ever wondered what the Deni Ute Muster site looks like from above? Take a flight with the Geelong Helicopter crew and try and spot your camp site from the sky.

**When: Friday – 10.00am to 5.00pm**

**Saturday – 9.00am to 5.00pm**

**Where: Next to the Main Gates on Conargo Road**



## FIREWORKS DISPLAY

Look up to see the amazing display by Howard & Sons.

**When: Saturday approx. 8.55pm**

**Where: Sports Arena**

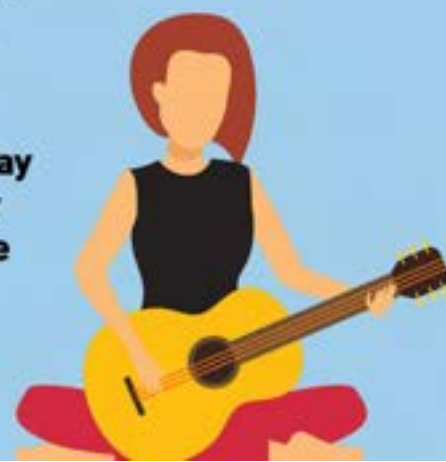
## AMBER LAWRENCE – KID GONE COUNTRY SHOWS

Amber Lawrence is a 6 time Golden Guitar Winner and the current Female Artist of the Year. Whilst she's known for her award winning singer songwriter albums – she's also a well loved entertainer for the kids, families, and let's be honest all ages!

Her 'Kids Gone Country' Albums have received ARIA nominations, play school appearances, and she's even gone viral with her hit song "My Big Mack Truck". Amber's kids shows are non stop fun, dancing and sing alongs!

**When: 11am Friday  
& 12pm Saturday**

**Where: Day Stage**





## BENDIGO LEGO USER GROUP



We are super excited to have the team from the Bendigo LEGO User Group on hand to help create a masterpiece made from thousands of small LEGO pieces. The group is made up of over 30 enthusiasts who have a love for sharing their passion all over the countryside. Don't miss your chance to be involved and add your square to the massive 5m long LEGO design.

**When: 10am – 4pm Friday and Saturday**  
**Where: Kids Lawn**

## CARE SOUTH MINI MUSTER MOBEEL COMPETITION

It's not the Muster without spotting many AMAZING mini mobeels getting around site. Bringing the competition back again this year we are expecting even more customised wagons, prams and pulleys, so don't miss out on your chance to be part of the fun! No need to enter just turn up for your chance to win 2 adult tickets to next years festival.

**When: 9.30am Saturday**  
**Where: Show n Shine Arena**

## PAW PATROL JUMPING CASTLE

One for the littlies, come and have a bounce with everyone's favourite characters on the Paw Patrol themed jumping castle. Set to impress at over 12m long!

**When: 10am to 4pm Friday & Saturday**  
**Where: Day Entertainment Area**



## BERKLEY SUPPER TANK

Part portable fishing show, part mobile fish tank and part educational program, the 14,000 litre Berkley Super Fishing Tank is designed to give the public a fish-eye-view on the world of angling. The presentations include catch and release techniques, preserving your catch for the dinner table, mastering lures and gear tips for first timers.

The team will also demonstrate how the many different types of fish react to different lures and techniques used by many of today's top anglers.

**When: 9am to 5pm Friday & Saturday**  
**Where: Day Entertainment Area**

## COATES SHOW N SHINE

The Coates Hire Show n Shine is not to be missed! Displaying the best Utes from all over Australia, this competition is the perfect opportunity to showcase your Ute and prove why it is the best of its kind. Competitors will also have the opportunity to win \$250 per category winner and have a chance at taking home the whopping \$2,000 and the prestigious title of 'Ute of the Year' winner.

**Categories this year are:** Best BnS Ute, Best Street Ute, Best 4x4 Ute, Best Themed Ute, Best Chicks Ute, Best Country Ute, Best Original/Restored Ute and this year there will be a few novelty categories thrown in. Must Pre-register to Enter.

**When: 8am to 4pm  
Friday & Saturday  
10am Saturday  
Presentations  
Where: Show n Shine Arena**





## CAT WORKWEAR TRADIE CHALLENGE

We are thrilled to have CAT Workwear as our sponsor for this year's Tradie Challenge. Come and watch the teams battle it out to build the Ultimate Sand Pit.

**When: Friday 9am to 3pm**

**Where: Festival Arena**



## SQUATTER TOURNAMENT

Fancy a game of Squatter and your chance to win great prizes?? Do you have what it takes to be the Grand Champion of the Squatter Tournament? Come and try your luck!

**When: 2pm to 5pm Friday & Saturday**

**Where: Day Entertainment Area**



## WOOD CHOP

Come and see the axes fly at the Wood Chop Demonstrations. There will be a wide range of cutters including juniors, pro's and sawyers. There are no logs too big for these wood chopping fanatics.

**When: 11am to 4pm Friday & Saturday**

**Where: Festival Arena**

## IZUZU IRON SUMMIT

This ride is not for the faint-hearted. Allowing Muster Patrons to experience a seriously steep 45 degree climb up and over a custom-built hydraulic ramp – six metres into the air – all from the comfort of an Isuzu D-MAX or MU-X.

The Iron Summit will be open for rides to all the off-road enthusiasts and anyone else looking to experience the gravity-defying capabilities of our Isuzu vehicles – with the only restriction being that riders must be over 145cm to participate!

**When: Friday & Saturday**

**8.00am to 5.00pm**

**Where: Festival Arena**

## RAY WHITE RIVERINA WHIPCRACKING

We are lucky enough to have the best whip crackers in the country putting on a show for the Deni Ute Muster patrons. Having travelled from all corners of Australia to be here, you will be blown away by the talent as the Riverina Whip Cracking Challenge takes place.

Fancy giving it a go for yourself? Have a crack in the Novice event which will take place at 2pm Friday.

**When: 2pm to 5pm Friday**

**& Saturday 9am to 5pm**

**Where: Festival Arena**





## ARB BULL RIDE

Come along and witness the most heart pounding sport on earth at the Bull Ride. The 2023 Bull Ride will feature the best bucking bulls from the Woodall's Rodeo stock.

Watch them rapidly charge out the chutes and experience the longest 8 seconds of your life. Can the rider hold on for that long or not?

**When: 3pm to 5pm Friday & Saturday**

**Where: Rodeo Arena**



## DRIVING COMPETITIONS

### GME CIRCLE WORK

The Circle Work is judged on a one-minute run per ute with points being awarded for driving skills, number and execution of circles.

### JUST COUNTRY BARREL RACING

Everyone has seen horses at rodeos go flat out across the arena and around barrels – this is just the same but for Utes. Two Utes will take off at the same time and head around the course set out by barrels, and try to get around them as fast as possible without knocking them over.



### GO TO WO

This competition is for drivers who can run their Ute around a driving course and stop with precision. The Go to Wo will see Utes, two at a time, run the course and try and stop within a predetermined space. The person who stops the closest to the witches' hat, and completes the course the quickest, free from infringements, will win.

**When: 9am – 1pm Friday & Saturday**

**Where: Sports Arena**





# MAIN STAGE

## Friday 29th September

**5.15pm** Andrew Swift

**6.00pm** Catherine Britt

**6.45pm** John Williamson

**7.45pm** Jayne Denham

**8.30pm** Missy Higgins

**9.30pm** Casey Barnes

**10.15pm** Lee Kernaghan

## Saturday 30th September

**5.30pm** Zara Lindeman

**6.15pm** Adam Harvey & Beccy Cole

**7.15pm** The Whitlams Black Stump Band

**8.00pm** Jessica Mauboy

**9.00pm** Fireworks

**9.15pm** Travis Collins

**10.15pm** James Johnston





# DAY STAGE

## Friday 29th September

**9.00am** Deni Bush Poets

---

**10.00am** Anagram Riot

---

**11.00am** Amber Lawrence 'Kids Gone Country Show'

---

**12.00pm** Pete Denahy & Band

---

**1.00pm** Rhys Crimmin

---

**2.00pm** Toyota Star Maker Loren Ryan

---

**3.00pm** Gretta Ziller

---

**4.00pm** Jade Gibson

---

## Saturday 30th September

**9.00am** Deni Bush Poets

---

**10.00am** The Carp Factory

---

**11.00am** Bogan Bingo

---

**12.00pm** Amber Lawrence 'Kids Gone Country Show'

---

**1.30pm** Duncan Toombs

---

**2.30pm** Jamie Preston

---

**3.30pm** Gympie Music Muster  
Talent Search Winner Brittany Elise

---

**4.30pm** Brittany Maggs

---







## BLUE SINGLET COUNT

Dont' miss out on the 2023 Blue Singlet Count! All you have to do is wear your 'Bluey' and head over to the Main Stage and collect your sticker for the offical count.

WHEN: 1pm Saturday

WHERE: Main Stage

**RECORD TO BREAK: 4,136**

## UTE COUNT

The Deni Ute Muster holds the title 'Ute Capital of the World', this is because of the awesome support we receive from our patrons.

If you brought your Ute, we will be counting it over the weekend.

**RECORD TO BREAK: 9,736**





Adult Singlet  
XS-4XL  
**\$26**



Adult Singlet  
XS-4XL  
**\$26**



Kids Singlet  
1-18  
**\$16**



Kids Singlet  
1-18  
**\$16**



2023 Deer Ute Muster Bar Mat  
**\$45**



2023 Diamond Slicer Available from Saturday Day  
**\$10**



Previous Years Individual Slicer 1999-2022  
**\$10 ea**



Battle Opener Keyring  
**\$5**



Adult Party Shirt  
XS-2XL  
Was \$40  
**Now \$35**



2023 Sheep Tag  
**\$2**



2023 Cattle Tag  
Was \$5  
**Now \$5**



2023 Stubby Holder  
**\$10**



2021 Cattle Tag  
Was \$5  
**Now \$2.50**



Bumper Sticker, Deer, Blue, Green, Red, Gold, Yellow  
**\$2**



2022 Cattle Tag  
Was \$5  
**Now \$2.50**



Unisex Navy Hoodie  
XS-4XL  
**\$80**



Unisex Navy Hoodie  
XS-4XL  
**\$80**



Unisex Navy Hoodie  
XS-4XL  
**\$80**



Unisex Navy Hoodie  
XS-4XL  
**\$80**



Unisex Navy Hoodie  
XS-4XL  
**\$80**



Unisex Navy Hoodie  
XS-4XL  
**\$80**



Unisex Navy Hoodie  
XS-4XL  
**\$80**



Unisex Navy Hoodie  
XS-4XL  
**\$80**



Unisex Grey Hoodie  
XS-4XL  
**\$80**



Unisex Grey Hoodie  
XS-4XL  
**\$80**



Unisex Grey Hoodie  
XS-4XL  
**\$80**



Unisex Grey Hoodie  
XS-4XL  
**\$80**



Unisex Grey Hoodie  
XS-4XL  
**\$80**



Unisex Grey Hoodie  
XS-4XL  
**\$80**



Unisex Grey Hoodie  
XS-4XL  
**\$80**



Unisex Grey Hoodie  
XS-4XL  
**\$80**



Unisex Charcoal Hoodie  
XS, L, 3XL, 4XL  
Only  
**\$80**



Unisex Charcoal Hoodie  
XS, L, 3XL, 4XL  
Only  
**\$80**



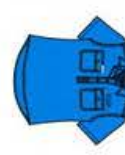
Unisex Charcoal Hoodie  
XS, L, 3XL, 4XL  
Only  
**\$80**



Unisex Charcoal Hoodie  
XS, L, 3XL, 4XL  
Only  
**\$80**



Unisex Charcoal Hoodie  
XS, L, 3XL, 4XL  
Only  
**\$80**



Unisex Charcoal Hoodie  
XS, L, 3XL, 4XL  
Only  
**\$80**



Unisex Charcoal Hoodie  
XS, L, 3XL, 4XL  
Only  
**\$80**



Unisex Charcoal Hoodie  
XS, L, 3XL, 4XL  
Only  
**\$80**

**BLUE SINGLET COUNT**

Your chance to Win 2024 Ute Muster Tickets!

**1PM SATURDAY MAIN STAGE**



Black Duffel Bag  
Was \$60  
**Now \$45**



Ladies Navy Work Shirt  
8-22  
**\$55**



Mens Navy Work Shirt  
XS-4XL  
**\$55**



Mens Red Long Sleeve White Logo Full Button  
XS-4XL  
**\$55**



Navy Cap  
**\$35**



Kids Green Long Sleeve Work Shirt  
2-18  
**\$50**



Adult Plain Navy Rugby  
XS-4XL  
**\$80**



Ladies Pink Pastel Pink Long Sleeve Work Shirt  
8-22  
**\$55**



Deer Ute Muster Bluey Towel  
**\$45**



Unisex Navy Regular Fit Soft Vest  
XS-4XL  
**\$80**



Khaki Baseball Hat  
**\$35**



Kids Navy Hoodie  
Was \$55  
**Now \$40**



2020 Muster Flag  
Was \$45  
**Now \$25**



2023 Muster Flag  
**\$45**



Ute Keyring  
**\$10**



Deer Ute Muster Window Slicker  
**\$10**



Unisex Black Regular Fit Soft Vest  
XS-4XL  
**\$80**



Navy Tracker Hat  
**\$35**



Kids Grey Hoodie  
**\$55**



Festival Wanker Towel  
**\$45**



Play on the Plains Stubby Holder  
**\$10**



Deer Ute Muster Stubby Holder  
**\$30**



Unisex Adult Artist Tee  
Celebrating 25 years XS-4XL  
**\$30**



Unisex Black Puffer Vest  
6-10 - XS-4XL  
**\$80**



Light Blue Cap  
**\$35**



Kids Bluey Tee  
**\$30**



Stainless Steel Drink Bottle  
**\$20**



Deer Ute Muster Bluey Flag  
**\$45**



Diamond Slicker Pack  
Includes 25 Slickers  
**\$150**



Ute Muster Souvenir Plates  
**\$30**



Round Up Your Males Souvenir Plates  
**\$30**



Navy Bucket Hat  
XS-4XL  
**\$35**



Kids Muster Snow Bags  
**\$22**



# TERMS & CONDITIONS

We reserve the right to change any or all of these terms and conditions, and/or add new terms and conditions at any time. When we do so, we will make a new copy of these available on our website. Your continued use of our website will be deemed to constitute your acceptance of such changes.

## TICKETS & WRISTBANDS

The festival ticket is sold by Deni Play on the Plains Limited [the organisers]. This ticket (wristband) is to be sold subject to the terms and conditions.

Wristbands are non-refundable and non-transferrable and must be purchased from the organisers authorised ticketing agency Oztix.

Wristbands may not be re sold, unless via the official ticket resale facility should one be made available by the organiser.

The purchaser of the wristband must ensure that the name on each ticket is correct and that ID may be asked for at the festival entry.

You are responsible for checking all festival information and ensuring you have purchased the correct tickets for the festival. No refunds will be processed if you make an error in relation to your ticket purchase.

Wristbands must be worn for the duration of the festival, failure to do so may result in your eviction. Any wristbands that are removed or tampered with will be rendered invalid and will not be replaced. Damaged or defaced wristbands will not be accepted.

Wristbands purchased for children aged under 18 years of age (minors) can only be purchased with an adult wristband.

Children Under 13 are admitted free and will be issued with an Under 13 wristband which must be worn. Parent or adult guardian must provide proof of age of the Under 13 if requested.

## GENERAL

The Deni Ute Muster [the festival] will not be cancelled due to adverse weather except on the advice of emergency services in extreme conditions in which case no refund or exchange will be given on wristbands.

The organisers are providers of recreational services and activities as defined under the Civil Liability Act. You are aware and acknowledge that the festival site contains all manner of obstacles, risks and dangers both known and unknown which may result in loss or damage to your property, personal injury or death. You choose to come onto the festival site at your own risk and to the full extent permitted by law, you release and indemnify the organisers, its agents, employees and volunteers from and against any claim or liability of any nature in relation to injury or death, from you or any third party which might arise from entry to or the use of the festival site by you and any accompanying persons and or minors regardless of how the damage, injury or death is sustained or caused.

The organisers reserve the right to vary advertised performing artists, entertainment and the festival program as is required and at its absolute discretion.

CCTV Cameras are operational over the festival.

Personal digital cameras are permitted at the festival. SLR cameras are permitted but professional photography equipment

(e.g. telephoto lenses; any lens over 20cm; any detachable lens) is not permitted without organiser-issued media accreditation. Festival staff will determine in their discretion whether permitted only on the basis that:

1. Images are only used for private and professional use; and
2. Images cannot be made available for sale and/or public display.

Recording or filming the festival is strictly prohibited.

The organisers reserve the right to confiscate and/or delete any footage, recordings and/or photos created by unauthorised or prohibited recording, filming or photography.

You consent to be included in film and sound recordings of the festival and for these recordings to be used by the organisers in any medium or context without further authorisation by or compensation to you.

In the event of injury or illness the organiser may, at the cost of the patron, arrange medical treatment and/or emergency evacuation as deemed necessary for the safety of the patron.

You are responsible for your own property. There is no storage available at the festival site.

## VEHICLES

NSW Road Laws apply on the Deniliquin Festival Site.

Vehicles once parked in the festival camp site cannot be moved until the end of the festival. Vehicles are not permitted to be driven around the festival camp site for any reason.

Bicycles/Scooters (non-motorised only), as per NSW Road Laws helmets must be worn at all times and a maximum speed of 10km (walking pace). Bicycles/Scooters are not allowed into the festival arena.

Buses will be operating in and out of town, please check your festival guide, website or APP for the bus timetable.

Alternatively, there will be a carpark located outside of the festival site where vehicles may be left and patrons enter via foot with their camping gear. Please note search conditions will apply.

## BEHAVIOUR

No swimming in channels or waterways within the festival site. Possession, sale or use of illicit substances is strictly prohibited at the festival and on site. Any person found with illegal drugs or illicit substances in their possession will be removed from the site and subject to Police action.

For safety and other reasons, some parts of the site are not open as part of the venue, patrons must not enter fenced off areas or areas to which access is denied.

Please help to keep our site and your campsite clean, place all rubbish in bins and take all items with you when you leave.

The organisers will not be responsible for any property left on the site and may recover the cost of removal and return to patron's address.

Whips are to be used at your own risk and sensibly.

The organisers may refuse you entry into or remove you from the festival if you

do not obey these terms and conditions



(b) refuse to allow the organisers to inspect bags, containers and vehicles at the festival

(c) if you disrupt the festival

(d) if you interfere with the enjoyment, comfort or safety of other persons at the festival.

(e) if you have acquired a stolen or counterfeit wristband.

If you are evicted from the festival/festival site or denied entry to the festival/festival site, you will not be entitled to any wristband refund and or compensation.

Patrons must not cause damage to, improperly use, remove or tamper with any festival site facility, event infrastructure, seating, toilets, furniture, vehicles, pipes, lighting, taps/fittings, electrical equipment, wiring, signage or enter any onsite bodies of water at the festival site. Patrons must not remove or attempt to remove any item or object from the festival site or surrounding area.

Patrons will be subject to prosecution for committing any offences within the festival site by New South Wales Police.

Patrons accept full liability and responsibility for any loss or damage caused in contravention of this clause or any other term of these Terms and Conditions.

## **ENTRY / EXIT TO AND FROM FESTIVAL SITE AND FESTIVAL ARENA**

It is a condition of entry to the festival site and festival arena that a search of you and your possessions and or vehicle be conducted. If you do not consent to such searches, you may be denied entry to the festival site and festival arena without refund.

It is a condition of entry into the festival arena that all patrons submit to being searched. This may include pat down of persons and physical inspection of bags and containers.

Non-alcoholic drinks taken into the festival arena must be unopened/sealed.

Unsealed empty plastic water bottles (no metal, glass or aluminium bottles) are allowed into the festival arena, these can be filled up at the free water stations.

Umbrellas and shade structures are not permitted into the festival arena.

Push bikes/Scooters are not permitted into the festival arena.

Activities such as moshing, crowd surfing, climbing and stage diving are strictly prohibited. Patrons engaging in these, or other dangerous activities will be removed from the festival arena.

Children under 16 years must be always accompanied by a parent or adult guardian at the entry gates and whilst at the festival or campgrounds.

Children 16 years or older do not need to be accompanied by a parent or guardian to enter or whilst they are in the festival arena.

Children under 18 years are not permitted to camp at the festival site unless they are camping with a parent or guardian. ID and proof of age must be provided if requested.

Patrons wishing to purchase and or consume alcohol must be 18 years and over and have valid photographic ID. Anyone found supplying or buying alcohol for a minor will be evicted from the event & may face criminal charges. Any minor found consuming or in possession of alcohol face similar action.

## **CAMPING**

All vehicles entering the Reserved Camping areas must have the appropriate valid Reserved Camping vehicle pass displayed on their windscreen.

Patrons must vacate the site/camping areas by 2.00pm on Sunday 1st October 2023.

## **ITEMS ALLOWED IN CAMPING AREAS ONLY**

- BBQ (gas bottle must comply with 2018 regulations)
- Wood – it must be under 60cm x 30cm for your own small campfire which must be contained in a drum (excessive fire wood will be confiscated)
- Camping gear
- Food, water and soft drink (strictly no glass)
- Fire drum (1/2 x 44 gallon or less)
- Generators – Please be mindful of your neighbours when in use.
- Alcohol – Every adult patron camping on site can bring one only slab/box/carton to a maximum of 30 cans of beer or pre-mix spirits or 4L cask of wine into the camping area.

This is one of the above for the entire festival not one per day. No Glass.

## **ITEMS PROHIBITED FROM THE EVENT SITE**

Prohibited items will be confiscated and not returned, with no exceptions.

Prohibited items include but are not limited to:-

- Firearms and ammunition.
- Glass
- Butane gas canisters and burners
- Liquid fuel containers such as kerosene, petrol, diesel and gas bottles, other than those allowed in purpose-built RVs, caravans and campervans that have been certified and fitted.
- Illicit substances
- Fireworks, flares or explosives
- Unregistered vehicles, vehicles with a permit or any vehicles that the organisers/event staff believe to be unroadworthy.
- Household furniture, vehicle parts or excess tyres
- Structures built on site in camping area
- Weapons including but not limited to: shovels, knives, axes, chainsaws
- Anti-social behaviour
- Beer funnels or bongs
- Drones or any other remote control devices
- Flammable liquids (container/jerry cans with flammable liquids will be confiscated)
- Projectiles or explosives in solid, liquid or gas form.
- Paint cans or spray paint cans
- Nitrous oxide bulbs and cannisters
- Wood over the allowed size of 60cm x 30cm
- Fireworks and flares are prohibited and will be confiscated on entry, anyone caught lighting fireworks and flares will be evicted.
- Animals are prohibited at the site, with the exception of service or assistance animals, such as Guide Dogs.
- Whips are not to be used in the festival arena unless part of the whip cracking demonstration/championships

Any other object the organisers decide could be dangerous or disruptive to the event or other patrons, this is up to their discretion.

**If it is important to you and on the prohibited list don't bother bringing it to the festival, as it will not be returned.**



# ACCESSIBILITY

The Deni Ute Muster is a community event and welcomes everybody. We are constantly working on ways to improve our Festival Site and the experience for all, including our guests with disabilities and limited mobility.

The Deni Ute Muster is held on rural land, the Festival Site is large, situated on 160 hectares. Paths of travel are either dirt or loose gravel, during peak periods the festival can be very crowded.

The accessible amenity blocks within the festival arena are basic.

During the day, the weather conditions can be extremely hot, and on some evenings, quite cool. In the event of rain, the site can become very muddy.

This can create some mobility issues for wheelchair users (both manual and power chair's) and for guests using other mobility devices like walkers.

## ACCESSIBILITY CAMPING

If you are a guest with disability or require some additional mobility considerations please read the details below regarding our camping sites:

The accessible camping sites located in close proximity to entry gate 2. Are close to wheelchair accessible amenities, has step-free access within the site along a flat but unpaved continuous accessible path of travel.

The intention of this accessible camping area is to prioritise the accessibility requirements our guests who use a mobility device like a wheelchair or power-chair.

If you require wheelchair access and would like to be accommodated in this area please contact Deni Ute Muster HQ 03 5881 3388 or [info@deniutemuster.com.au](mailto:info@deniutemuster.com.au)

We also acknowledge that a number of our guests may also have other mobility, sensory, cognitive or medical requirements beyond wheelchair access that may also require accommodation in this camping area.

Given the small size of the accessible camping area we will do our best to accommodate any guest who identifies with any of these accessibility/medical considerations within this site. We please ask you to please contact via email [info@deniutemuster.com.au](mailto:info@deniutemuster.com.au)

or call 03 5881 3388 to discuss how we can best accommodate you. Depending on the amount of enquiries, we may have capacity to provide a secondary accessible camping area that is a further distance to the entry gate but still provides access to the same amenities available in our primary accessible camping site.

We know some power-wheelchair users also need access to power for the purposes of recharging their power-chair battery. A recharging station is available at the operations centre within the festival site.

If you require further assistance with any mobility, sensory, cognitive or medical needs while staying with us in the camping area please reach out to one of our friendly volunteers. We wish you an enjoyable and fun time at the Deni Ute Muster 2023.

## DISTANCES

Distances from the accessible camp areas to attractions and places of interest in the festival arena are marked on maps at each gate entrance.

## COMPANION CARD

The festival provides a weekend ticket, free of charge to the Companion Card holder's carer to ensure both can have a fantastic time at our event.

Only 1 (one) carer complimentary ticket per companion card.

## ACCESSIBILITY FOR DAY VISITORS

We have a designated wheelchair access parking area and an ambulant access parking area left of the bus stop with direct access to the search area and entry via gate.